


Table of Contents

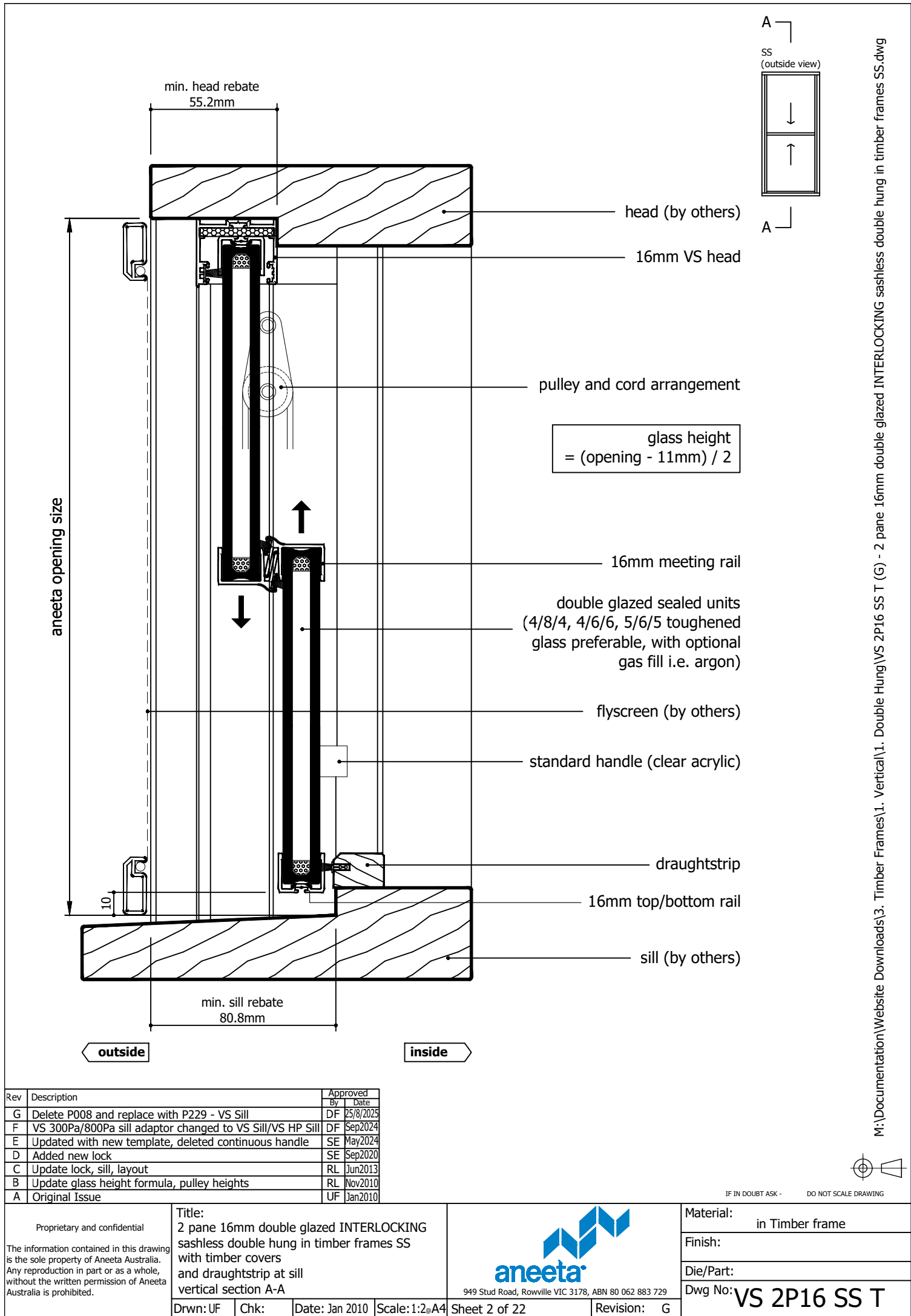
Page	View	Cover Type	Sill Type
2	Vertical Section	Timber covers	Draughtstrip
3	Vertical Section	Timber covers	Draughtstrip x 2
4	Vertical Section	Timber covers	VS Sill
5	Vertical Section	Timber covers	VS HP Sill
6	Vertical Section	Timber covers	None
7	Vertical Section	Timber covers	Flapseal
8	Horizontal Section	Timber covers	-
9	Vertical Section	Aluminium covers outside, timber covers inside	Draughtstrip
10	Vertical Section	Aluminium covers outside, timber covers inside	Draughtstrip x 2
11	Vertical Section	Aluminium covers outside, timber covers inside	VS Sill
12	Vertical Section	Aluminium covers outside, timber covers inside	VS HP Sill
13	Vertical Section	Aluminium covers outside, timber covers inside	None
14	Vertical Section	Aluminium covers outside, timber covers inside	Flapseal
15	Horizontal Section	Aluminium covers outside, timber covers inside	-
16	Vertical Section	Aluminium covers	Draughtstrip
17	Vertical Section	Aluminium covers	Draughtstrip x 2
18	Vertical Section	Aluminium covers	VS Sill
19	Vertical Section	Aluminium covers	VS HP Sill
20	Vertical Section	Aluminium covers	None
21	Vertical Section	Aluminium covers	Flapseal
22	Horizontal Section	Aluminium covers	-

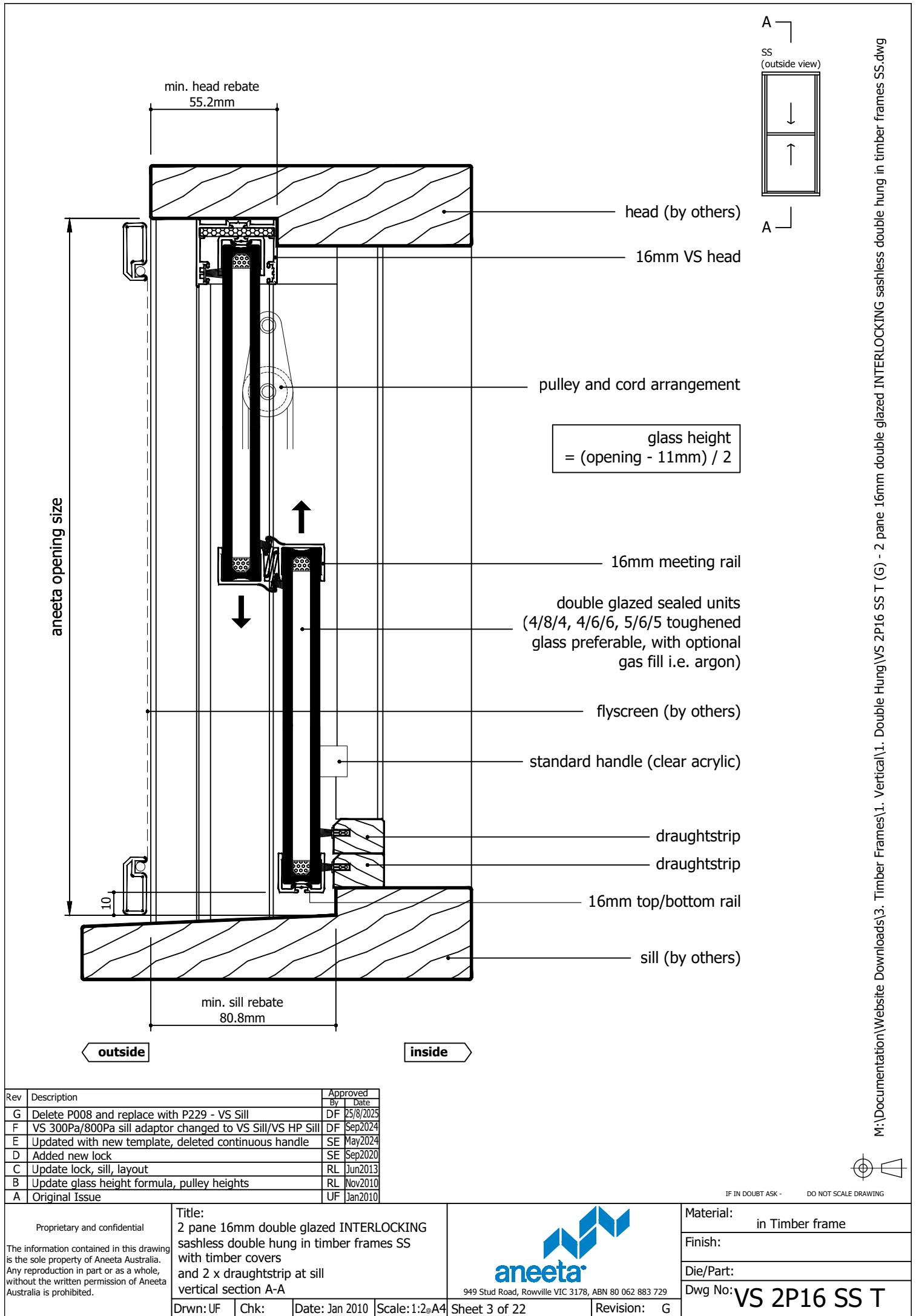
Rev	Description	Approved By	Date
G	Delete P008 and replace with P229 - VS Sill	DF	25/8/2025
F	VS 300Pa/800Pa sill adaptor changed to VS Sill/VS HP Sill	DF	Sep2024
E	Updated with new template, deleted continuous handle	SE	May2024
D	Added new lock	SE	Sep2020
C	Update lock, sill, layout	RL	Jun2013
B	Update glass height formula, pulley heights	RL	Nov2010
A	Original Issue	UF	Jan2010

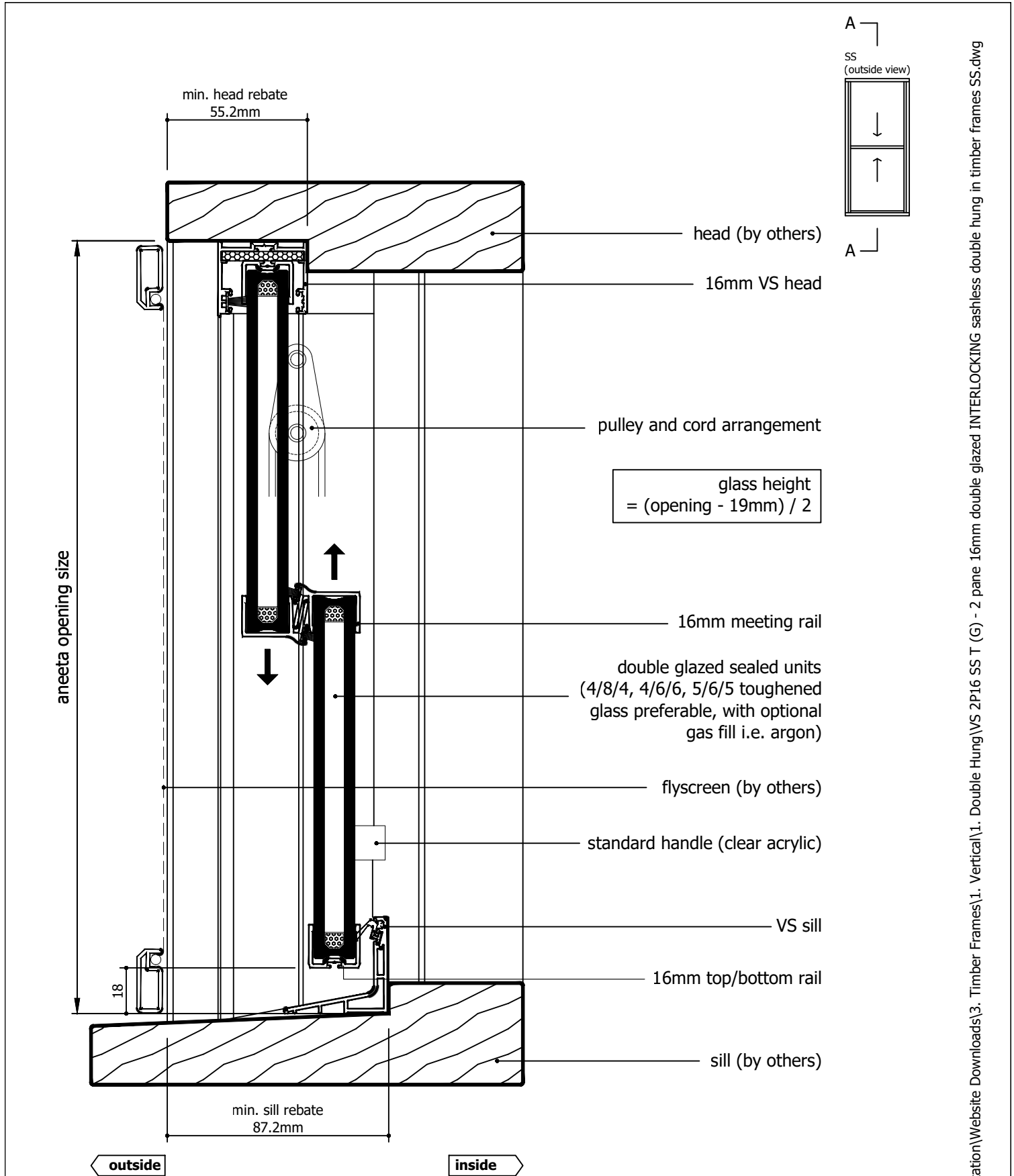
<p>Proprietary and confidential</p> <p>The information contained in this drawing is the sole property of Aneeta Australia. Any reproduction in part or as a whole, without the written permission of Aneeta Australia is prohibited.</p>	<p>Title: 2 pane 16mm double glazed INTERLOCKING sashless double hung in timber frames SS</p>			 <p>949 Stud Road, Rowville VIC 3178, ABN 80 062 883 729</p>		Material:	in Timber frame
						Finish:	
						Die/Part:	
						Dwg No:	VS 2P16 SS T
Drwn: UF	Chk:	Date: Jan 2010	Scale: 1:2@A4	Sheet 1 of 22	Revision: G		



IF IN DOUBT ASK - DO NOT SCALE DRAWING



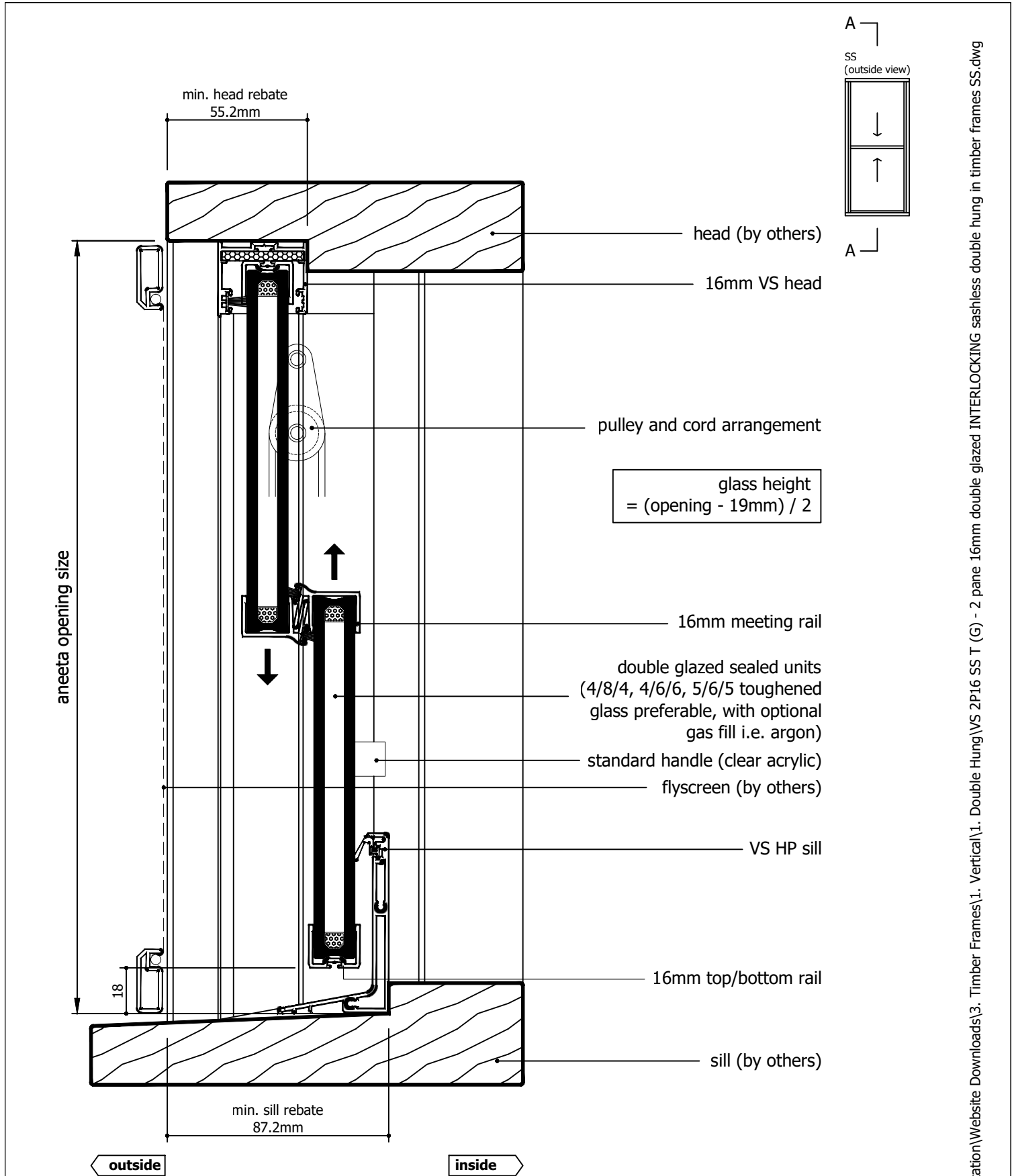





Rev	Description	Approved By	Date
G	Delete P008 and replace with P229 - VS Sill	DF	25/8/2025
F	VS 300Pa/800Pa sill adaptor changed to VS Sill/VS HP Sill	DF	Sep2024
E	Updated with new template, deleted continuous handle	SE	May2024
D	Added new lock	SE	Sep2020
C	Update lock, sill, layout	RL	Jun2013
B	Update glass height formula, pulley heights	RL	Nov2010
A	Original Issue	UF	Jan2010

Proprietary and confidential The information contained in this drawing is the sole property of Aneeta Australia. Any reproduction in part or as a whole, without the written permission of Aneeta Australia is prohibited.		Title: 2 pane 16mm double glazed INTERLOCKING sashless double hung in timber frames SS with timber covers and VS sill vertical section A-A		 949 Stud Road, Rowville VIC 3178, ABN 80 062 883 729		Material: in Timber frame	
Drwn: UF		Chk:		Date: Jan 2010		Finish:	
Scale: 1:2@A4		Sheet 4 of 22		Revision: G		Die/Part:	
						Dwg No: VS 2P16 SS T	

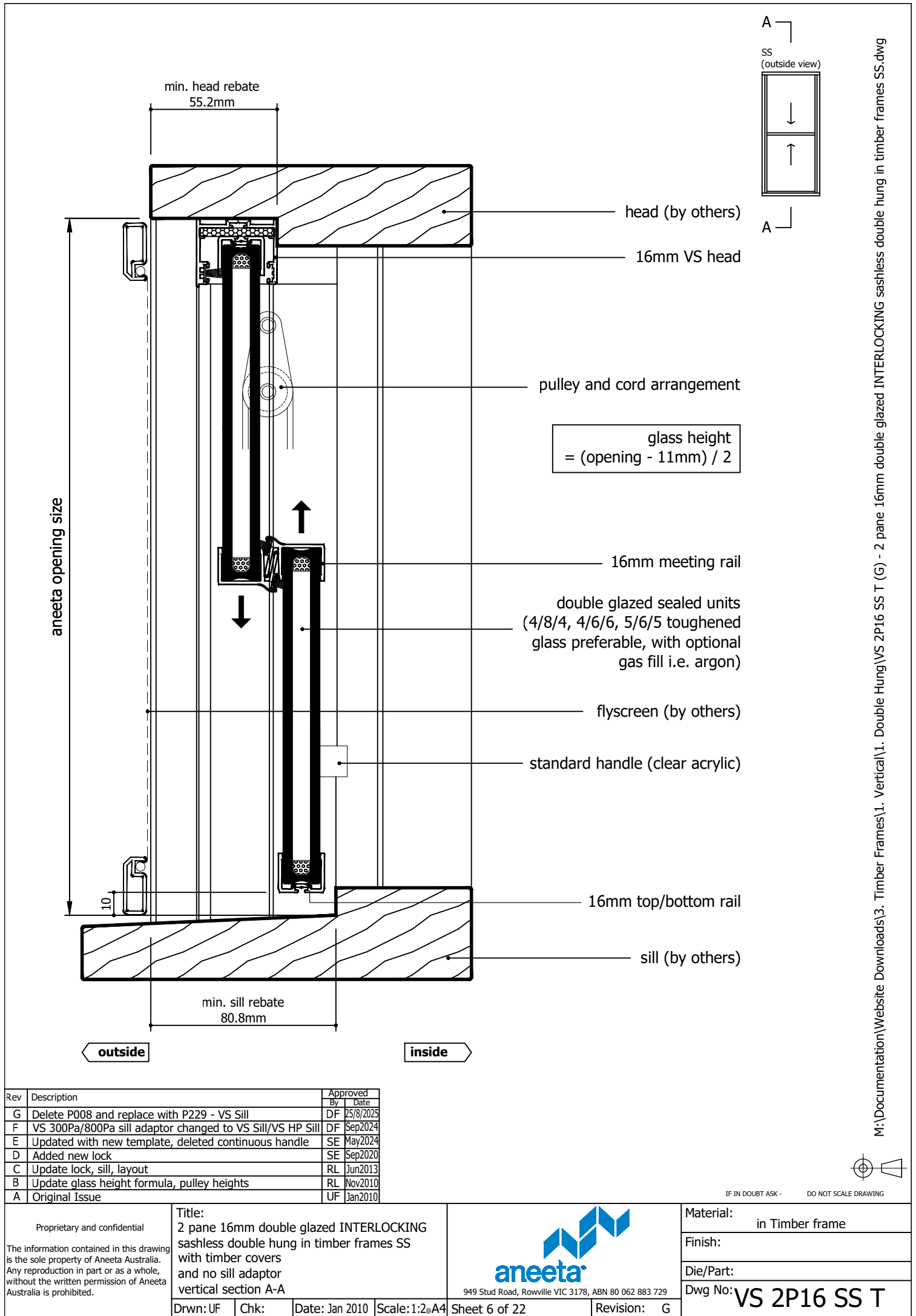
M:\Documentation\Website Downloads\3. Timber Frames\1. Vertical\1. Double Hung\VS 2P16 SS T (G) - 2 pane 16mm double glazed INTERLOCKING sashless double hung in timber frames SS.dwg

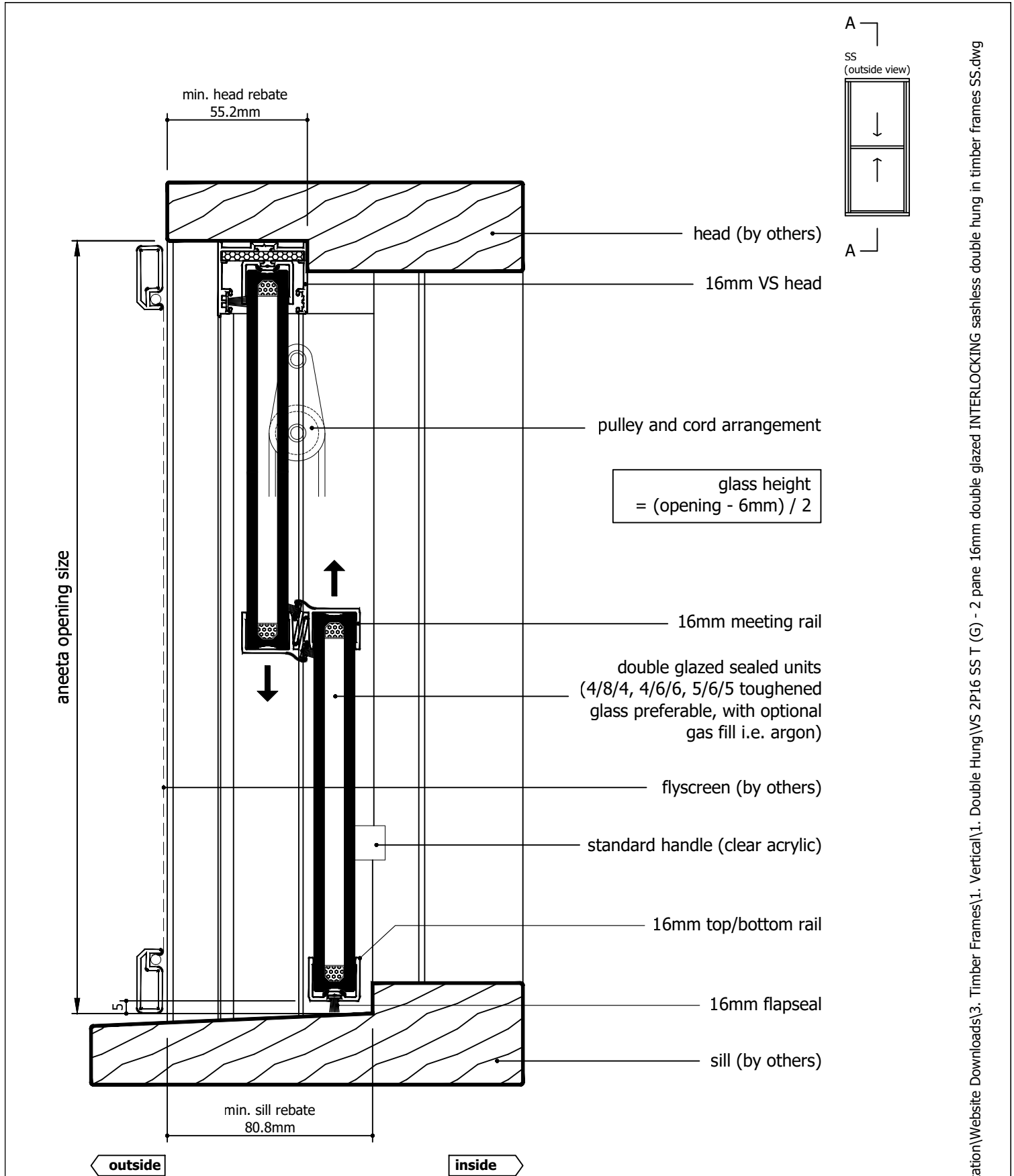


Rev	Description	Approved By	Date
G	Delete P008 and replace with P229 - VS Sill	DF	25/8/2025
F	VS 300Pa/800Pa sill adaptor changed to VS Sill/VS HP Sill	DF	Sep2024
E	Updated with new template, deleted continuous handle	SE	May2024
D	Added new lock	SE	Sep2020
C	Update lock, sill, layout	RL	Jun2013
B	Update glass height formula, pulley heights	RL	Nov2010
A	Original Issue	UF	Jan2010


Proprietary and confidential The information contained in this drawing is the sole property of Aneeta Australia. Any reproduction in part or as a whole, without the written permission of Aneeta Australia is prohibited.		Title: 2 pane 16mm double glazed INTERLOCKING sashless double hung in timber frames SS with timber covers and VS HP sill vertical section A-A		 949 Stud Road, Rowville VIC 3178, ABN 80 062 883 729		Material: in Timber frame
Drwn: UF		Chk:	Date: Jan 2010	Scale: 1:2@A4	Sheet 5 of 22	Revision: G
						Finish:
						Die/Part:
						Dwg No: VS 2P16 SS T

M:\Documentation\Website Downloads\3. Timber Frames\1. Vertical\1. Double Hung\VS 2P16 SS T (G) - 2 pane 16mm double glazed INTERLOCKING sashless double hung in timber frames SS.dwg





Rev	Description	Approved By	Date
G	Delete P008 and replace with P229 - VS Sill	DF	25/8/2025
F	VS 300Pa/800Pa sill adaptor changed to VS Sill/VS HP Sill	DF	Sep2024
E	Updated with new template, deleted continuous handle	SE	May2024
D	Added new lock	SE	Sep2020
C	Update lock, sill, layout	RL	Jun2013
B	Update glass height formula, pulley heights	RL	Nov2010
A	Original Issue	UF	Jan2010

<div>Proprietary and confidential</div> <div>The information contained in this drawing is the sole property of Aneeta Australia. Any reproduction in part or as a whole, without the written permission of Aneeta Australia is prohibited.</div>	Title: 2 pane 16mm double glazed INTERLOCKING sashless double hung in timber frames SS with timber covers and 16mm flapseal at sill vertical section A-A				<div> 949 Stud Road, Rowville VIC 3178, ABN 80 062 883 729</div>	Material: in Timber frame
						Finish:
						Die/Part:
						Dwg No: VS 2P16 SS T
	Drwn: UF	Chk:	Date: Jan 2010	Scale: 1:2@A4	Sheet 7 of 22	Revision: G

M:\Documentation\Website Downloads\3. Timber Frames\1. Vertical\1. Double Hung\VS 2P16 SS T (G) - 2 pane 16mm double glazed INTERLOCKING sashless double hung in timber frames SS.dwg

glass width = opening - 40mm

aneeta opening size

flyscreen (optional by others)

16mm combination tee

timber cover outside (optional)

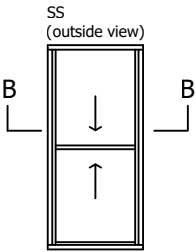
top pane

bottom pane

timber cover

lock

jamb (by others)




outside

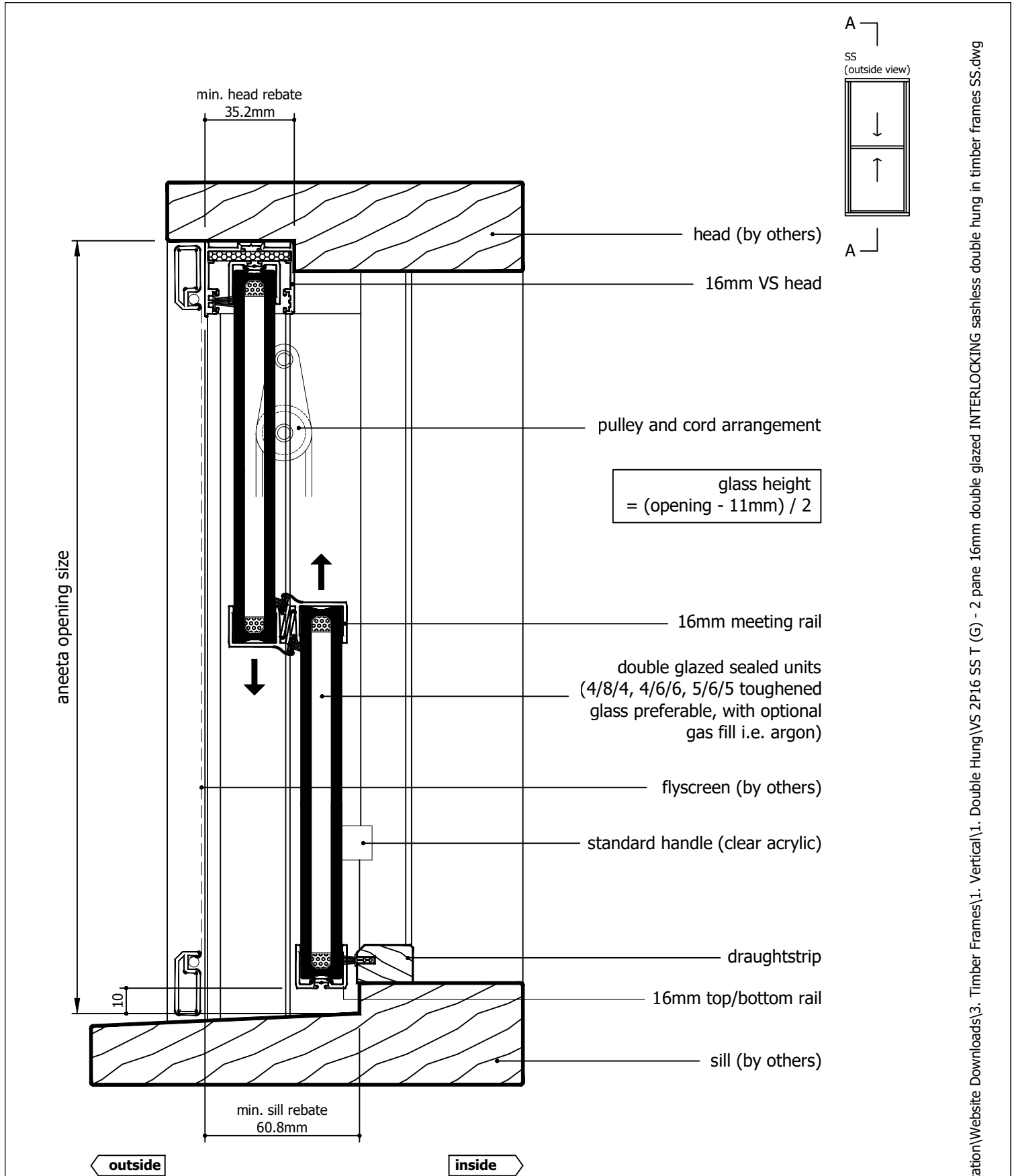
inside

101.3


Rev	Description	Approved By	Date
G	Delete P008 and replace with P229 - VS Sill	DF	25/8/2025
F	VS 300Pa/800Pa sill adaptor changed to VS Sill/VS HP Sill	DF	Sep2024
E	Updated with new template, deleted continuous handle	SE	May2024
D	Added new lock	SE	Sep2020
C	Update lock, sill, layout	RL	Jun2013
B	Update glass height formula, pulley heights	RL	Nov2010
A	Original Issue	UF	Jan2010

<div>Proprietary and confidential</div> <div>The information contained in this drawing is the sole property of Aneeta Australia. Any reproduction in part or as a whole, without the written permission of Aneeta Australia is prohibited.</div>	Title: 2 pane 16mm double glazed INTERLOCKING sashless double hung in timber frames SS with timber covers				<div> 949 Stud Road, Rowville VIC 3178, ABN 80 062 883 729</div>	Material: in Timber frame	
	horizontal section B-B					Finish:	
	Drwn: UF					Die/Part:	
	Date: Jan 2010					Dwg No: VS 2P16 SS T	
	Scale: 1:1@A4		Sheet 8 of 22			Revision: G	

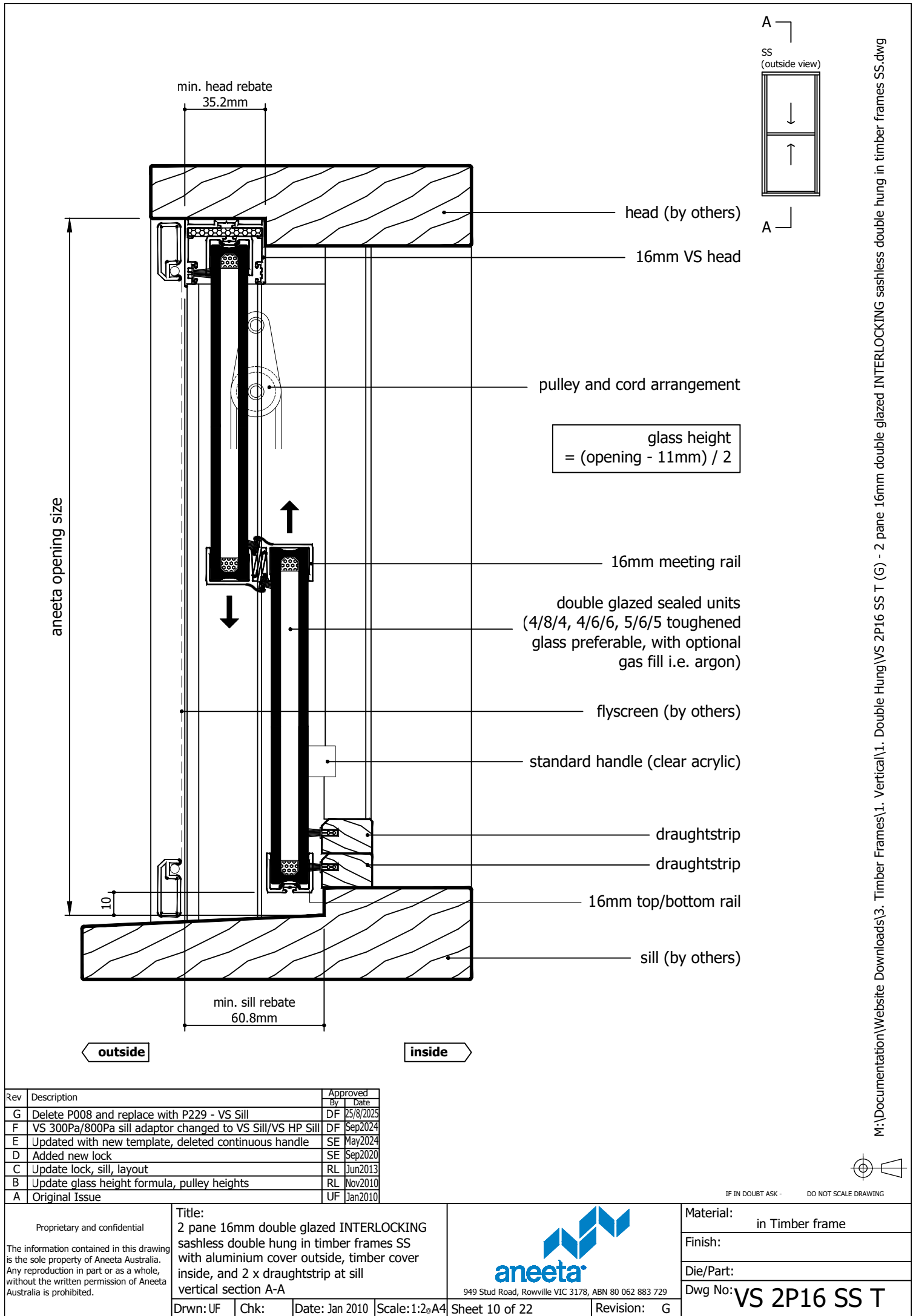
M:\Documentation\Website Downloads\3. Timber Frames\1. Vertical\1. Double Hung\VS 2P16 SS T (G) - 2 pane 16mm double glazed INTERLOCKING sashless double hung in timber frames SS.dwg

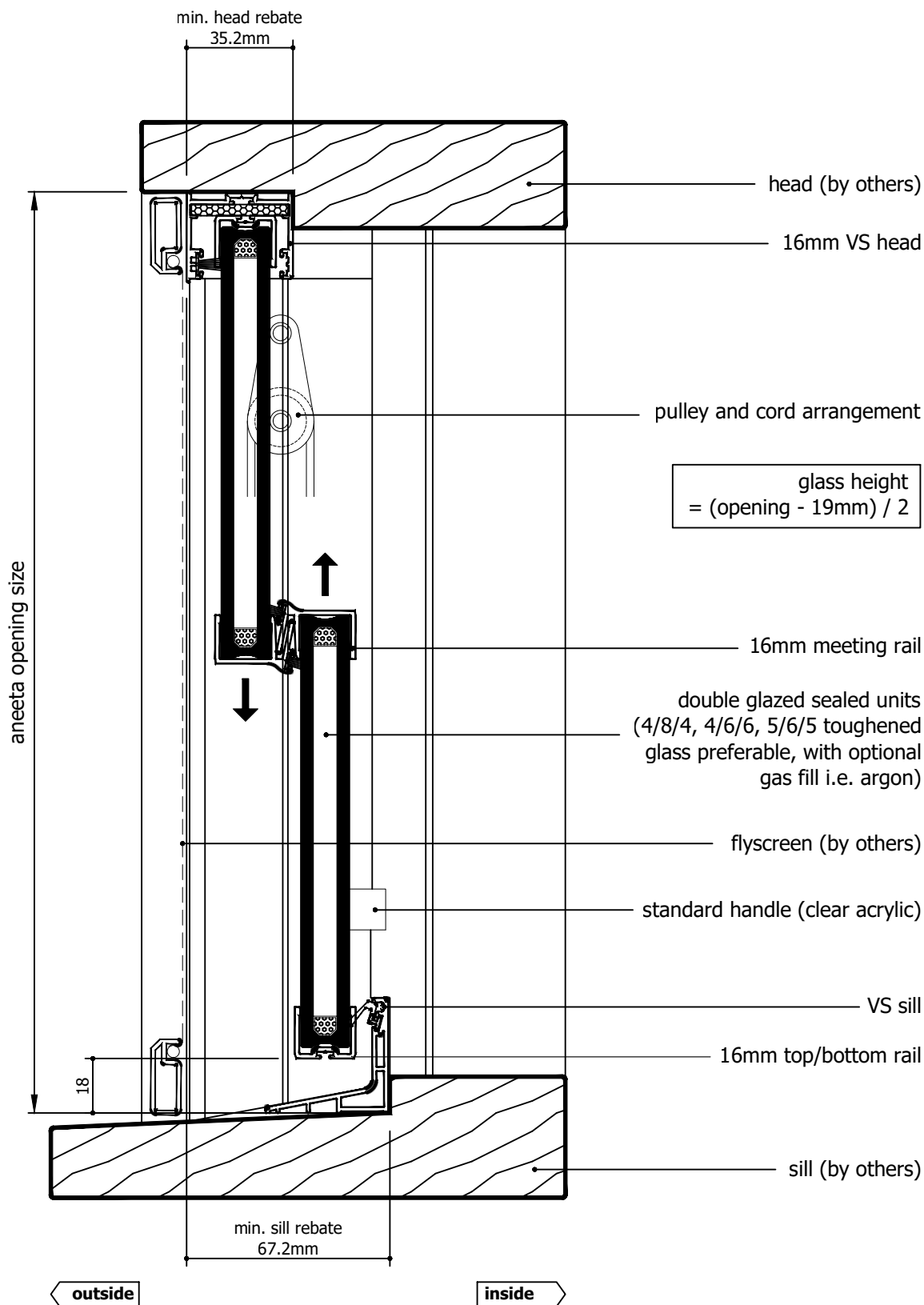
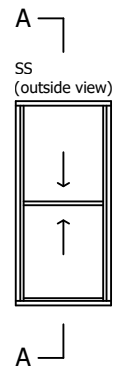


Rev	Description	Approved By	Date
G	Delete P008 and replace with P229 - VS Sill	DF	25/8/2025
F	VS 300Pa/800Pa sill adaptor changed to VS Sill/VS HP Sill	DF	Sep2024
E	Updated with new template, deleted continuous handle	SE	May2024
D	Added new lock	SE	Sep2020
C	Update lock, sill, layout	RL	Jun2013
B	Update glass height formula, pulley heights	RL	Nov2010
A	Original Issue	UF	Jan2010

<div>Proprietary and confidential</div> <div>The information contained in this drawing is the sole property of Aneeta Australia. Any reproduction in part or as a whole, without the written permission of Aneeta Australia is prohibited.</div>	Title: 2 pane 16mm double glazed INTERLOCKING sashless double hung in timber frames SS with aluminium cover outside, timber cover inside, and draughtstrip at sill vertical section A-A				<div> 949 Stud Road, Rowville VIC 3178, ABN 80 062 883 729</div>	Material: in Timber frame		
						Finish:		
						Die/Part:		
						Dwg No: VS 2P16 SS T		
Drwn: UF	Chk:	Date: Jan 2010	Scale: 1:2@A4	Sheet 9 of 22	Revision: G			

M:\Documentation\Website Downloads\3. Timber Frames\1. Double Hung\VS 2P16 SS T (G) - 2 pane 16mm double glazed INTERLOCKING sashless double hung in timber frames SS.dwg

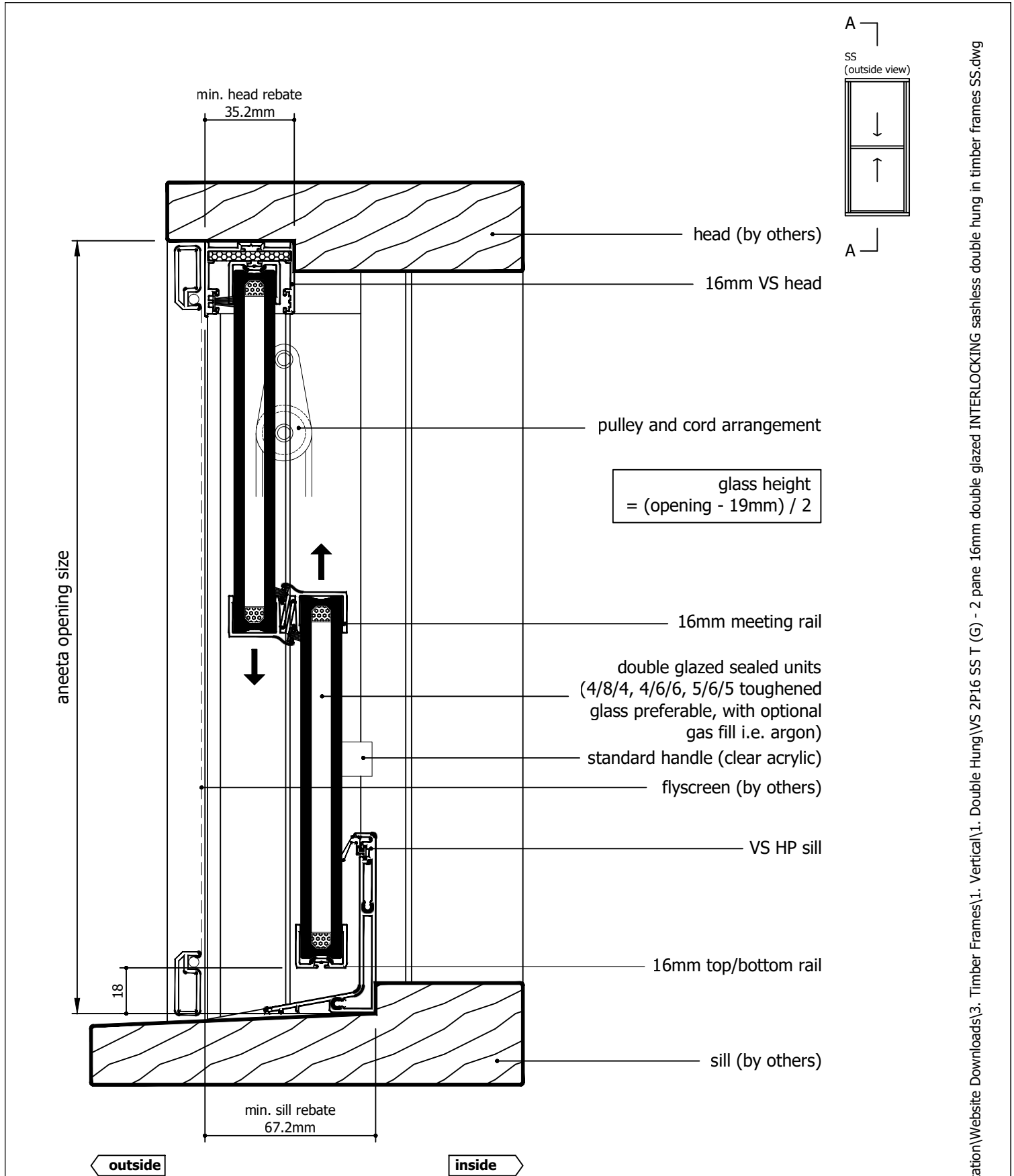





Rev	Description	Approved By	Date
G	Delete P008 and replace with P229 - VS Sill	DF	25/8/2025
F	VS 300Pa/800Pa sill adaptor changed to VS Sill/VS HP Sill	DF	Sep2024
E	Updated with new template, deleted continuous handle	SE	May2024
D	Added new lock	SE	Sep2020
C	Update lock, sill, layout	RL	Jun2013
B	Update glass height formula, pulley heights	RL	Nov2010
A	Original Issue	UF	Jan2010

Proprietary and confidential The information contained in this drawing is the sole property of Aneeta Australia. Any reproduction in part or as a whole, without the written permission of Aneeta Australia is prohibited.	Title: 2 pane 16mm double glazed INTERLOCKING sashless double hung in timber frames SS inside, and VS sill vertical section A-A		 949 Stud Road, Rowville VIC 3178, ABN 80 062 883 729		Material:	in Timber frame
					Finish:	
					Die/Part:	
					Dwg No:	VS 2P16 SS T
Drwn: UF	Chk:	Date: Jan 2010	Scale: 1:2@A4	Sheet 11 of 22	Revision:	G

M:\Documentation\Website Downloads\3. Timber Frames\1. Vertical\1. Double Hung\VS 2P16 SS T (G) - 2 pane 16mm double glazed INTERLOCKING sashless double hung in timber frames SS.dwg



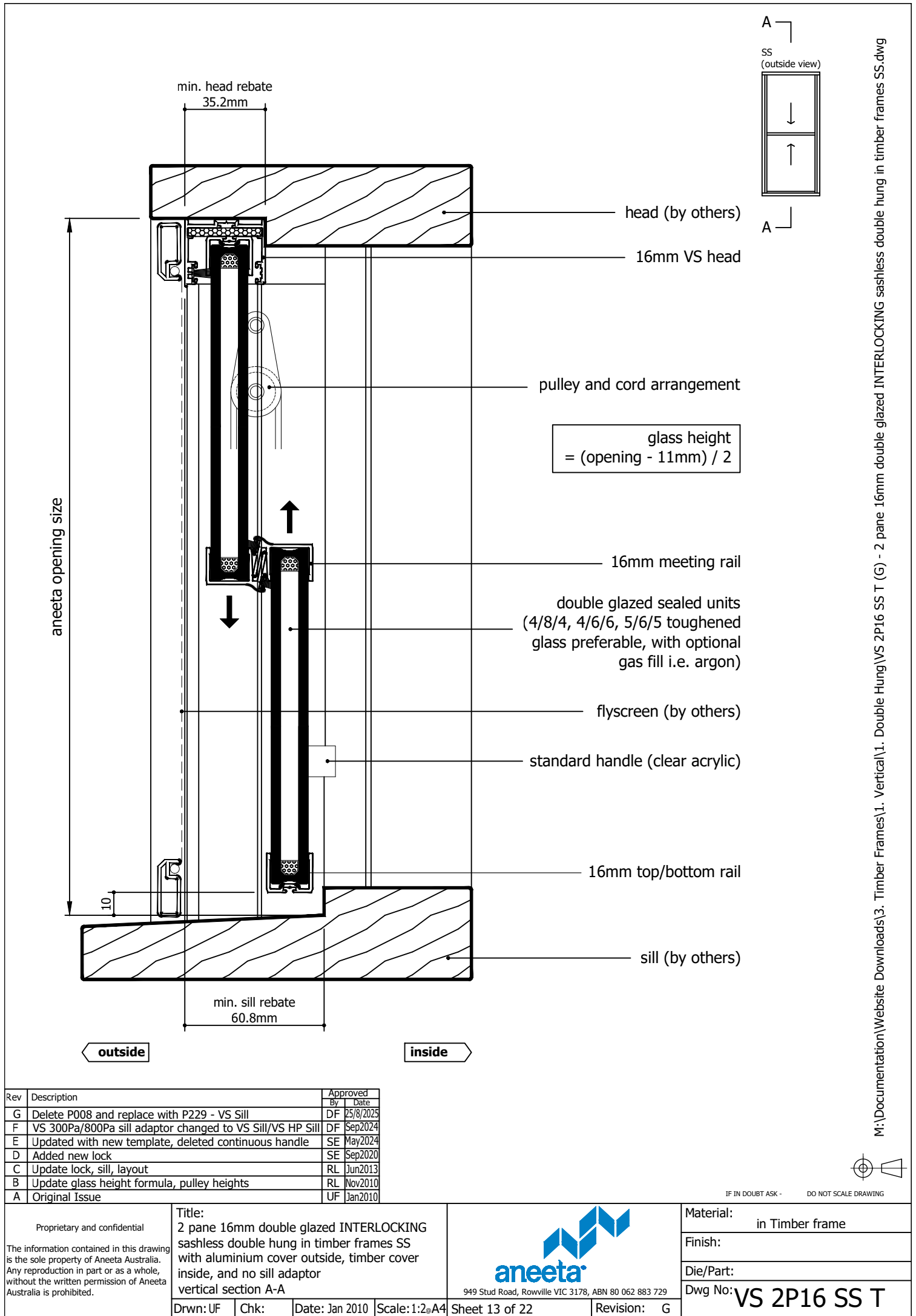
Rev	Description	Approved By	Date
G	Delete P008 and replace with P229 - VS Sill	DF	25/8/2025
F	VS 300Pa/800Pa sill adaptor changed to VS Sill/VS HP Sill	DF	Sep2024
E	Updated with new template, deleted continuous handle	SE	May2024
D	Added new lock	SE	Sep2020
C	Update lock, sill, layout	RL	Jun2013
B	Update glass height formula, pulley heights	RL	Nov2010
A	Original Issue	UF	Jan2010

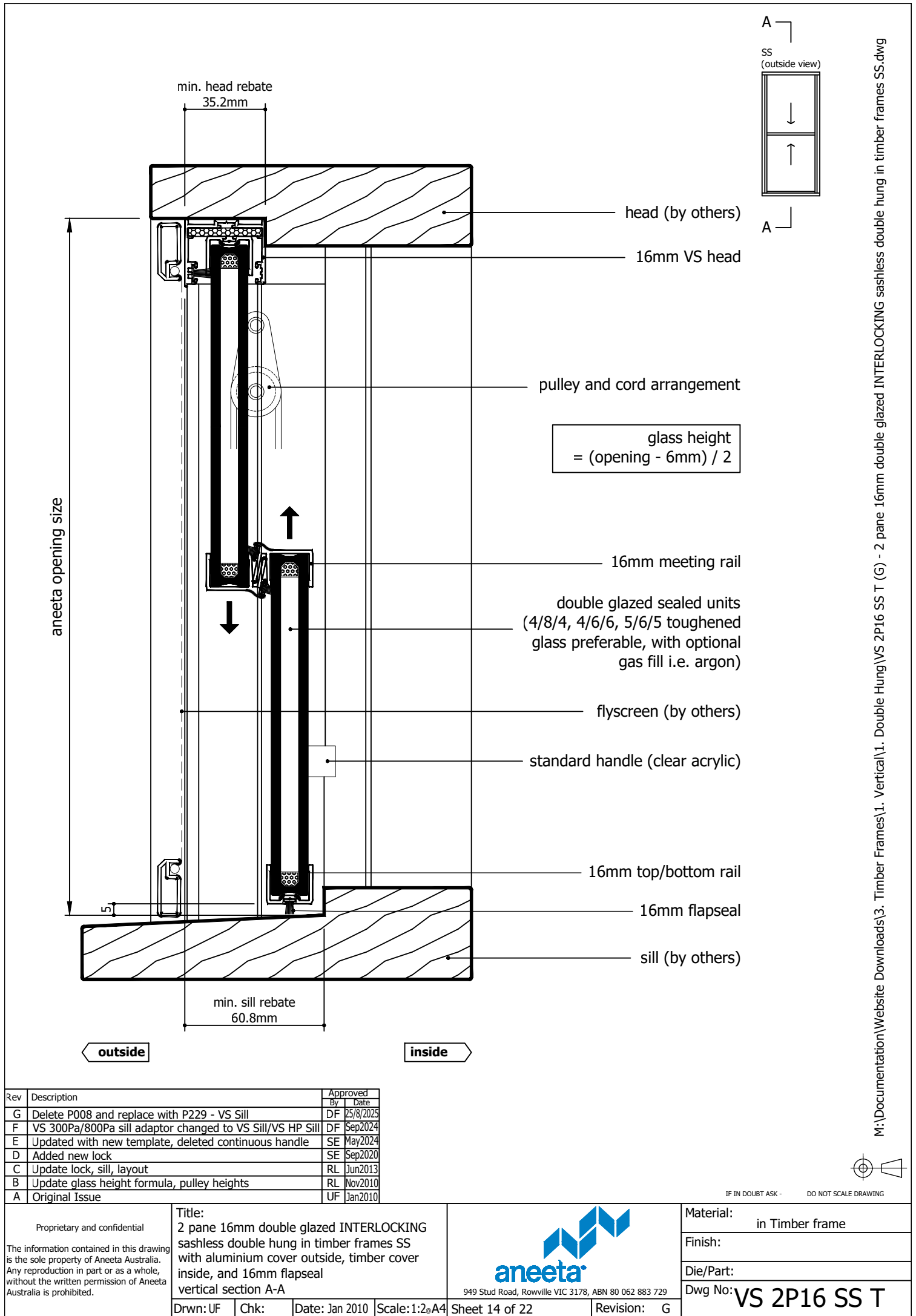
Proprietary and confidential The information contained in this drawing is the sole property of Aneeta Australia. Any reproduction in part or as a whole, without the written permission of Aneeta Australia is prohibited.		Title: 2 pane 16mm double glazed INTERLOCKING sashless double hung in timber frames SS inside, and VS HP sill vertical section A-A		 949 Stud Road, Rowville VIC 3178, ABN 80 062 883 729		Material: in Timber frame	
						Finish:	
						Die/Part:	
						Dwg No: VS 2P16 SS T	
Drwn: UF	Chk:	Date: Jan 2010	Scale: 1:2@A4	Sheet 12 of 22	Revision: G		

M:\Documentation\Website Downloads\3. Timber Frames\1. Double Hung\VS 2P16 SS T (G) - 2 pane 16mm double glazed INTERLOCKING sashless double hung in timber frames SS.dwg



IF IN DOUBT ASK - DO NOT SCALE DRAWING





glass width = opening - 40mm

aneeta opening size

flyscreen (optional by others)

16mm combination tee

top pane

bottom pane

timber cover

lock

jamb (by others)

SS
(outside view)


outside

inside

80.3

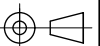
Rev	Description	Approved By	Date
G	Delete P008 and replace with P229 - VS Sill	DF	25/8/2025
F	VS 300Pa/800Pa sill adaptor changed to VS Sill/VS HP Sill	DF	Sep2024
E	Updated with new template, deleted continuous handle	SE	May2024
D	Added new lock	SE	Sep2020
C	Update lock, sill, layout	RL	Jun2013
B	Update glass height formula, pulley heights	RL	Nov2010
A	Original Issue	UF	Jan2010

Proprietary and confidential The information contained in this drawing is the sole property of Aneeta Australia. Any reproduction in part or as a whole, without the written permission of Aneeta Australia is prohibited.	Title: 2 pane 16mm double glazed INTERLOCKING sashless double hung in timber frames SS with aluminium cover outside, timber cover inside horizontal section B-B		
	Drwn: UF	Chk:	Date: Jan 2010

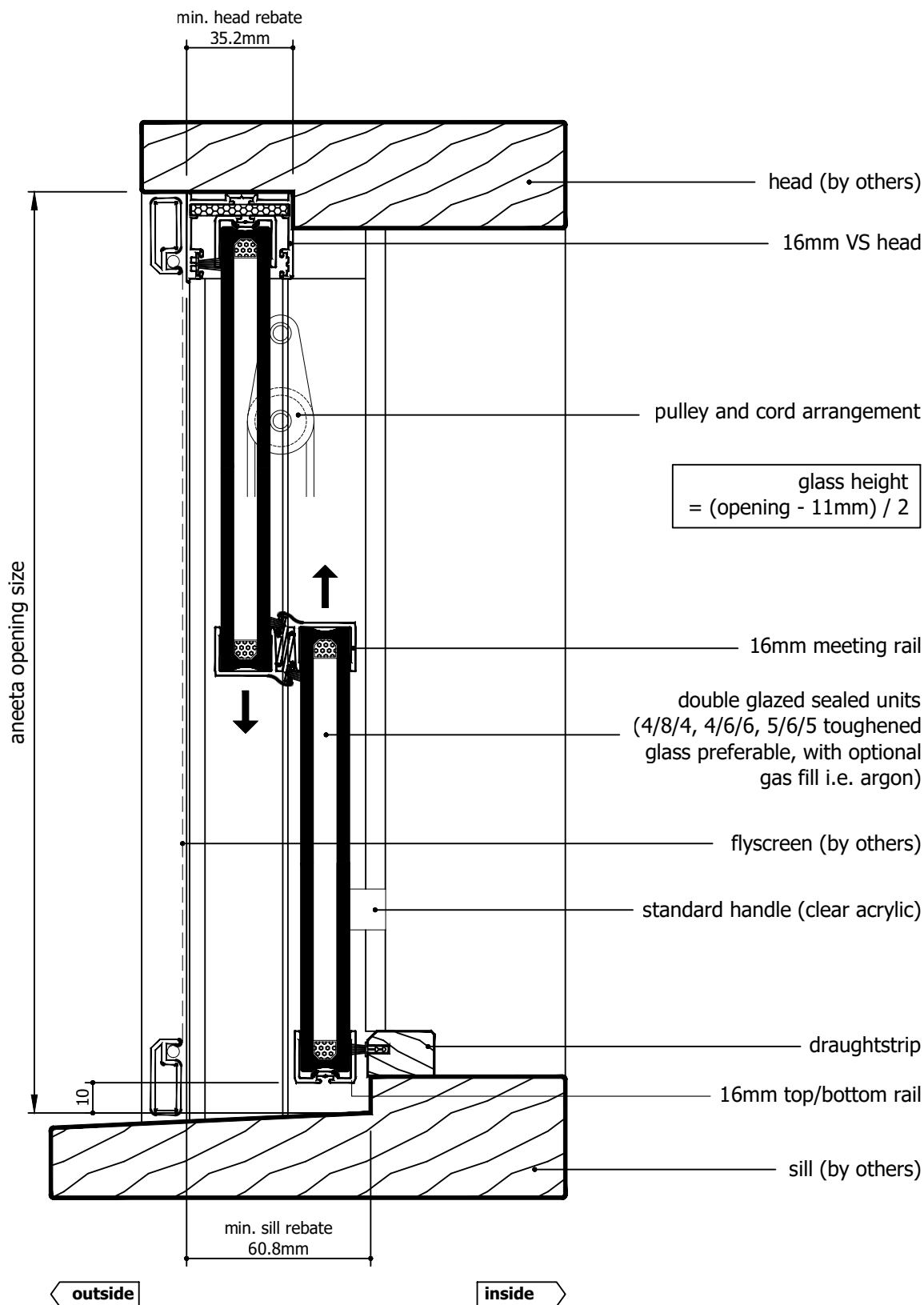
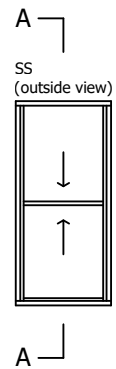
 949 Stud Road, Rowville VIC 3178, ABN 80 062 883 729	
Sheet 15 of 22	Revision: G

Material:	in Timber frame
Finish:	
Die/Part:	
Dwg No:	VS 2P16 SS T


M:\Documentation\Website Downloads\3. Timber Frames\1. Vertical\1. Double Hung\VS 2P16 SS T (G) - 2 pane 16mm double glazed INTERLOCKING sashless double hung in timber frames SS.dwg



IF IN DOUBT ASK - DO NOT SCALE DRAWING



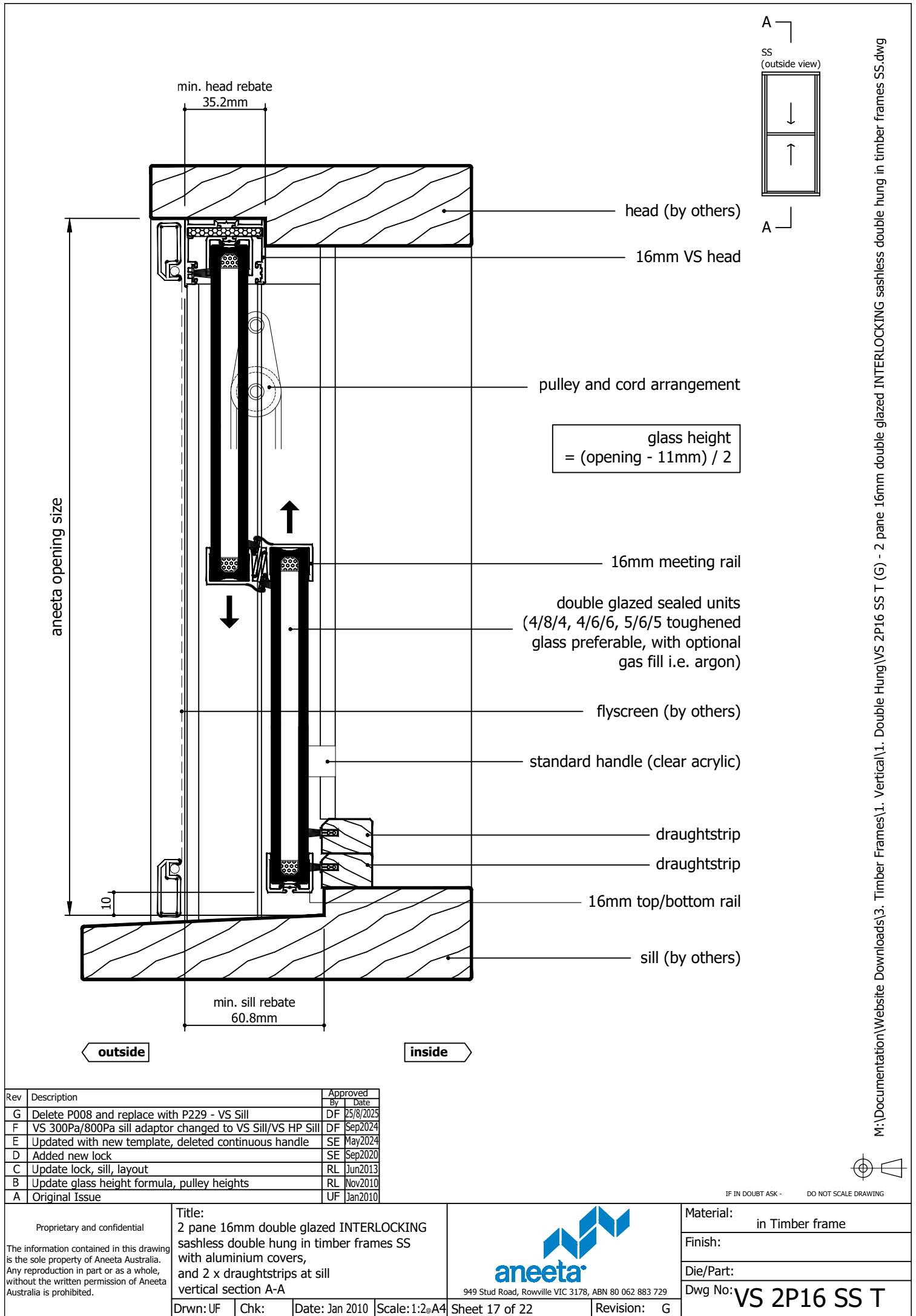
Rev	Description	Approved By	Date
G	Delete P008 and replace with P229 - VS Sill	DF	25/8/2025
F	VS 300Pa/800Pa sill adaptor changed to VS Sill/VS HP Sill	DF	Sep2024
E	Updated with new template, deleted continuous handle	SE	May2024
D	Added new lock	SE	Sep2020
C	Update lock, sill, layout	RL	Jun2013
B	Update glass height formula, pulley heights	RL	Nov2010
A	Original Issue	UF	Jan2010

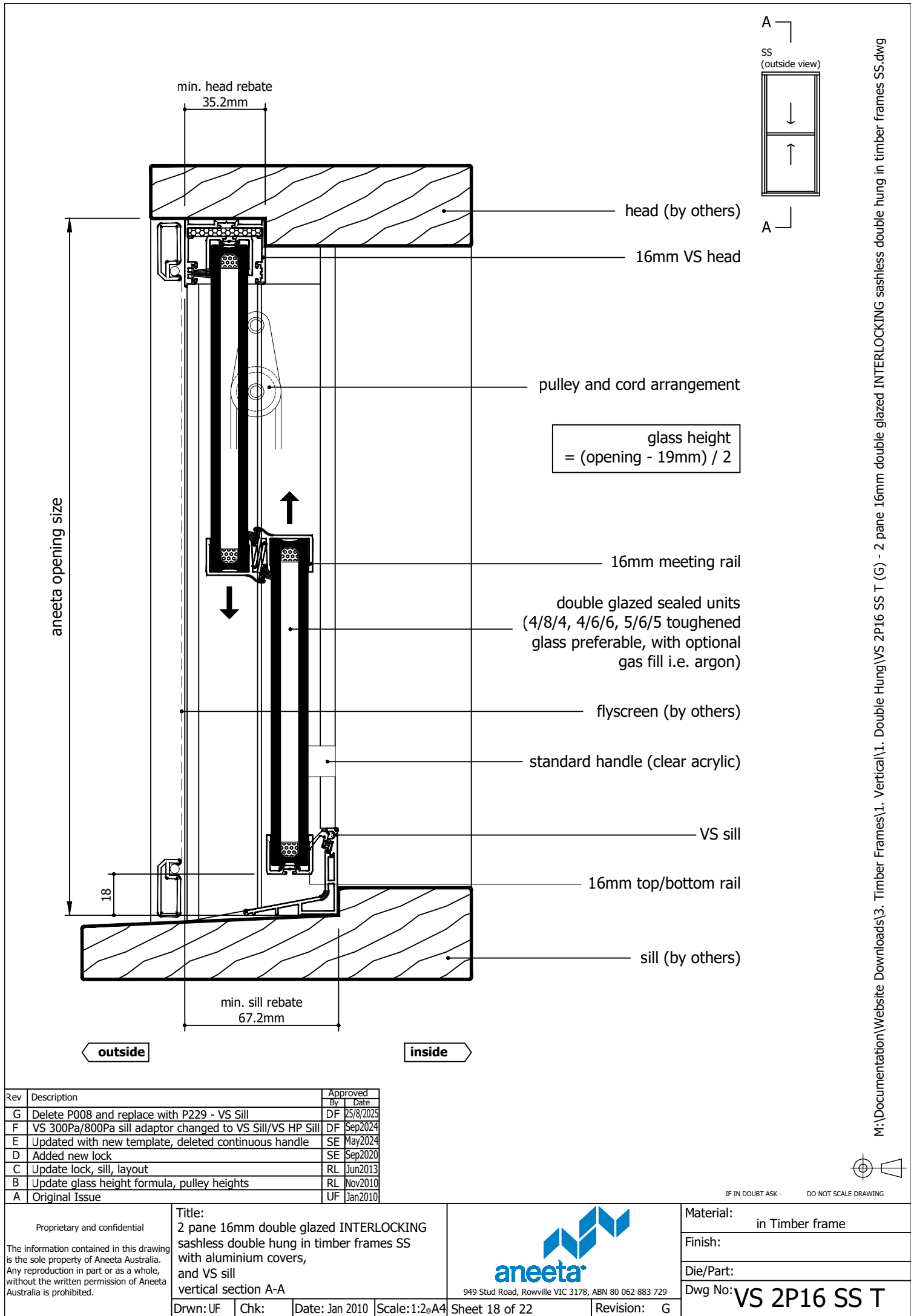
<div>Proprietary and confidential</div> <div>The information contained in this drawing is the sole property of Aneeta Australia. Any reproduction in part or as a whole, without the written permission of Aneeta Australia is prohibited.</div>	<div>Title: 2 pane 16mm double glazed INTERLOCKING sashless double hung in timber frames SS with aluminium covers, and draughtstrips at sill vertical section A-A</div>				<div> 949 Stud Road, Rowville VIC 3178, ABN 80 062 883 729</div>	Material:	in Timber frame
						Finish:	
						Die/Part:	
						Dwg No:	VS 2P16 SS T
	Drwn: UF	Chk:	Date: Jan 2010	Scale: 1:2@A4		Sheet 16 of 22	Revision: G

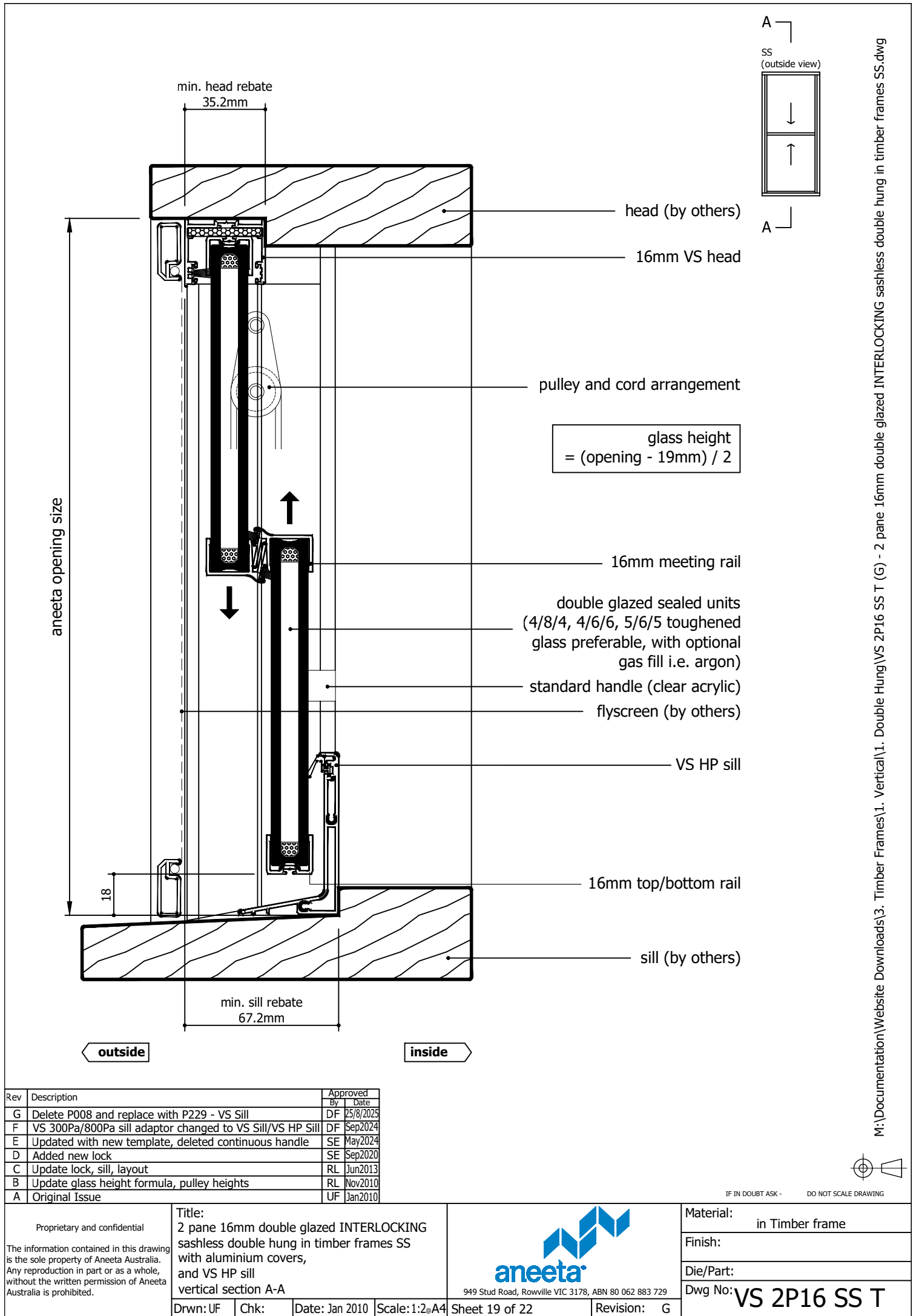
M:\Documentation\Website Downloads\3. Timber Frames\1. Vertical\1. Double Hung\VS 2P16 SS T (G) - 2 pane 16mm double glazed INTERLOCKING sashless double hung in timber frames SS.dwg

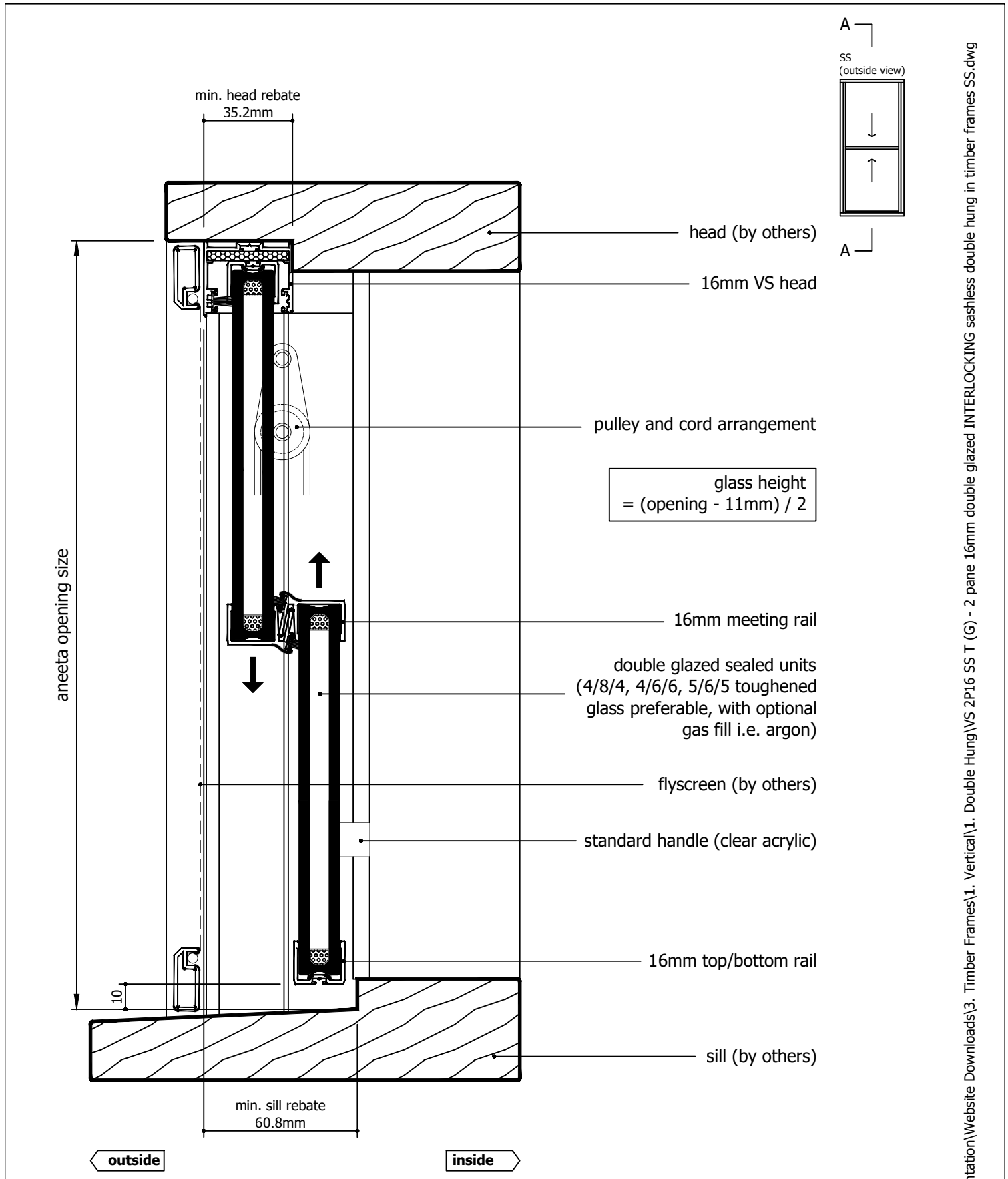


IF IN DOUBT ASK - DO NOT SCALE DRAWING






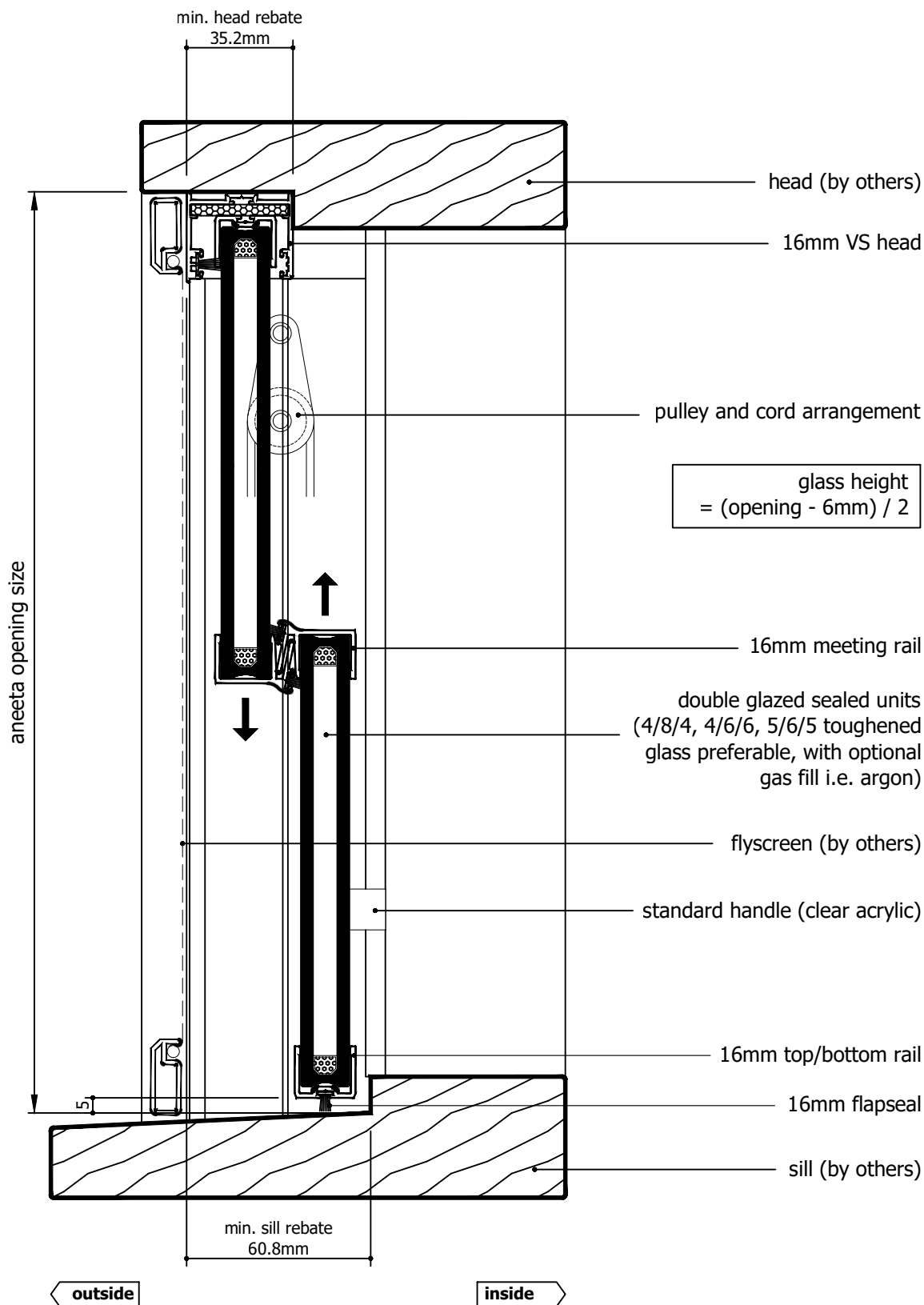
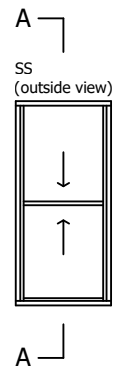





Rev	Description	Approved By	Date
G	Delete P008 and replace with P229 - VS Sill	DF	25/8/2025
F	VS 300Pa/800Pa sill adaptor changed to VS Sill/VS HP Sill	DF	Sep2024
E	Updated with new template, deleted continuous handle	SE	May2024
D	Added new lock	SE	Sep2020
C	Update lock, sill, layout	RL	Jun2013
B	Update glass height formula, pulley heights	RL	Nov2010
A	Original Issue	UF	Jan2010

<div>Proprietary and confidential</div> <div>The information contained in this drawing is the sole property of Aneeta Australia. Any reproduction in part or as a whole, without the written permission of Aneeta Australia is prohibited.</div>	<div>Title: 2 pane 16mm double glazed INTERLOCKING sashless double hung in timber frames SS with aluminium covers, and no sill adaptor vertical section A-A</div>				<div> 949 Stud Road, Rowville VIC 3178, ABN 80 062 883 729</div>	<div>Material: in Timber frame</div>	
						<div>Finish:</div>	
						<div>Die/Part:</div>	
						<div>Dwg No: VS 2P16 SS T</div>	
<div>Drwn: UF</div>		<div>Chk:</div>	<div>Date: Jan 2010</div>	<div>Scale: 1:2@A4</div>	<div>Sheet 20 of 22</div>	<div>Revision: G</div>	

M:\Documentation\Website Downloads\3. Timber Frames\1. Vertical\1. Double Hung\VS 2P16 SS T (G) - 2 pane 16mm double glazed INTERLOCKING sashless double hung in timber frames SS.dwg



Rev	Description	Approved By	Date
G	Delete P008 and replace with P229 - VS Sill	DF	25/8/2025
F	VS 300Pa/800Pa sill adaptor changed to VS Sill/VS HP Sill	DF	Sep2024
E	Updated with new template, deleted continuous handle	SE	May2024
D	Added new lock	SE	Sep2020
C	Update lock, sill, layout	RL	Jun2013
B	Update glass height formula, pulley heights	RL	Nov2010
A	Original Issue	UF	Jan2010

Proprietary and confidential The information contained in this drawing is the sole property of Aneeta Australia. Any reproduction in part or as a whole, without the written permission of Aneeta Australia is prohibited.	Title: 2 pane 16mm double glazed INTERLOCKING sashless double hung in timber frames SS with aluminium covers, and 16mm flapseal vertical section A-A				 949 Stud Road, Rowville VIC 3178, ABN 80 062 883 729		Material:	in Timber frame
							Finish:	
							Die/Part:	
							Dwg No:	VS 2P16 SS T
							Drwn: UF	Chk: Date: Jan 2010
Scale: 1:20 A4		Sheet 21 of 22		Revision: G				

M:\Documentation\Website Downloads\3. Timber Frames\1. Vertical\1. Double Hung\VS 2P16 SS T (G) - 2 pane 16mm double glazed INTERLOCKING sashless double hung in timber frames SS.dwg



IF IN DOUBT ASK - DO NOT SCALE DRAWING

glass width = opening - 40mm

aneeta opening size

flyscreen (optional by others)

16mm combination tee

top pane

bottom pane

aluminium cover

lock

jamb (by others)

SS
(outside view)



outside

64.7

inside

Rev	Description	Approved By	Date
G	Delete P008 and replace with P229 - VS Sill	DF	25/8/2025
F	VS 300Pa/800Pa sill adaptor changed to VS Sill/VS HP Sill	DF	Sep2024
E	Updated with new template, deleted continuous handle	SE	May2024
D	Added new lock	SE	Sep2020
C	Update lock, sill, layout	RL	Jun2013
B	Update glass height formula, pulley heights	RL	Nov2010
A	Original Issue	UF	Jan2010

Proprietary and confidential
The information contained in this drawing is the sole property of Aneeta Australia. Any reproduction in part or as a whole, without the written permission of Aneeta Australia is prohibited.

Title:
2 pane 16mm double glazed INTERLOCKING sashless double hung in timber frames SS with aluminium covers

horizontal section B-B

Drwn: UF

Chk:

Date: Jan 2010

Scale: 1:1@A4

Sheet 22 of 22

Revision: G



949 Stud Road, Rowville VIC 3178, ABN 80 062 883 729

Material: in Timber frame

Finish:

Die/Part:

Dwg No: VS 2P16 SS T



IF IN DOUBT ASK - DO NOT SCALE DRAWING

M:\Documentation\Website Downloads\3. Timber Frames\1. Vertical\1. Double Hung\VS 2P16 SS T (G) - 2 pane 16mm double glazed INTERLOCKING sashless double hung in timber frames SS.dwg